

Installation instruction do88 performance intercooler pipes for AUDI SEAT SKODA VW 1.8 / 2.0 TSI (MQB)

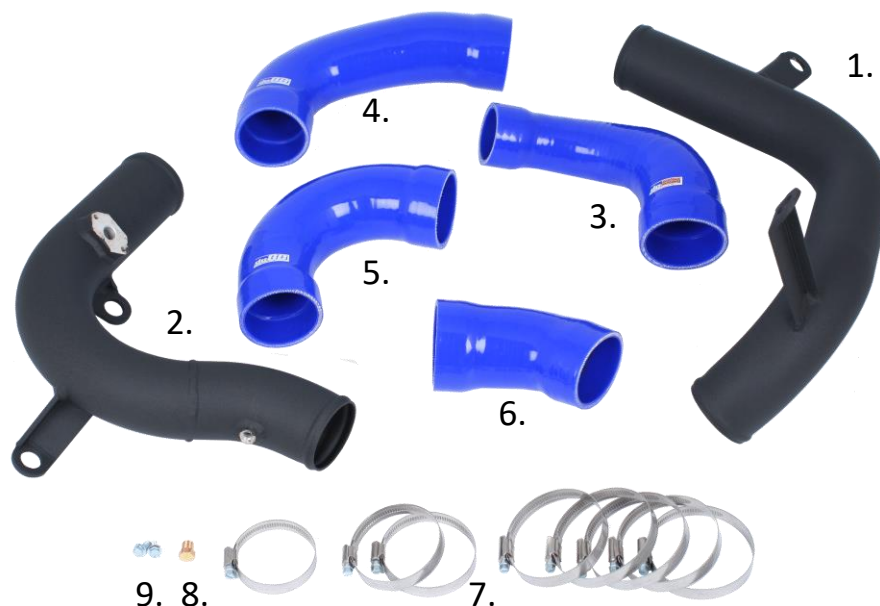
Part number: TR-220

This instruction shows how to replace the OEM intercoolers pipes with do88 performance intercooler pipes.

At this type of installation we always recommend that you have mechanical experience and knowledge about safety during work on vehicles.

Parts included:

1. Intercooler pipe, Turbo to Intercooler
2. Intercooler pipe, Intercooler to Throttle Body
3. Silicone hose Turbo outlet
4. Silicone hose Intercooler inlet
5. Silicone hose Intercooler outlet
6. Silicone hose Throttle body
7. 8x Hose clamps
8. Meth bung blanking screw 1/8 NPT
9. 2x M5 screws for MAP-sensor



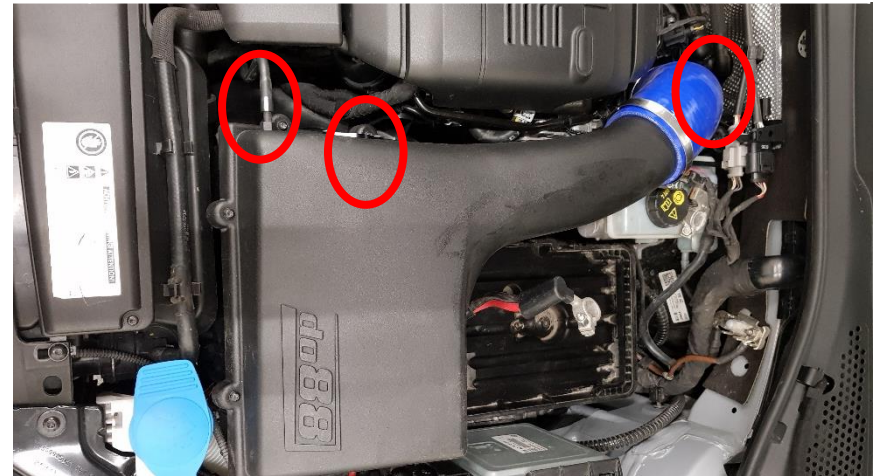
This installation instruction are written according to our installation of this intercooler pipe kit performed on a VW Golf GTI MY-14. Other vehicles that this intercooler also fit to might have some differences in the way of installation.



1. Disconnect both battery terminals. Also remove the battery bracket 1x Hex 13mm screw and then remove the battery from the car.



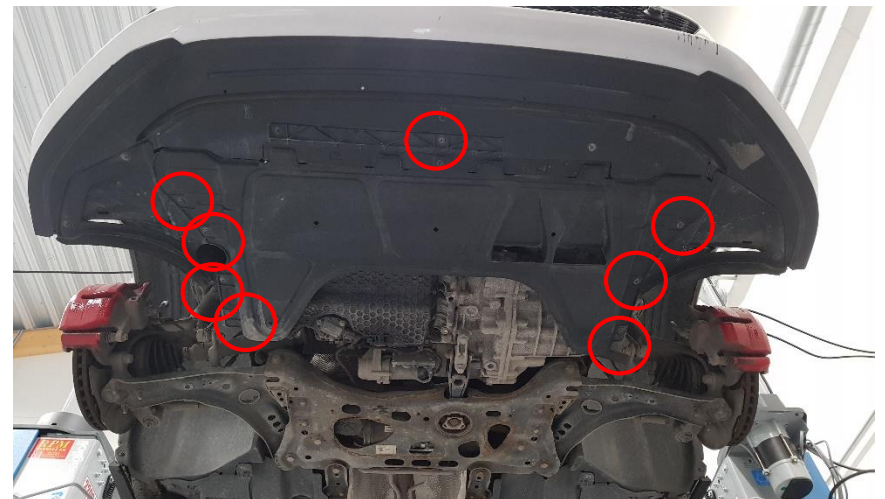
2. Remove the air filter box. Remove hose clamp, vacuum hose, SAI-connection (if your car has it). Then pull the air filter box upwards (it can sit quite hard in its rubber bushings).



3. Loosen 1x Torx T30 screw at the pressure pipe bracket and 1x hose clamp on the turbo outlet. Also disconnect the small plastic box from its bracket on the battery tray.



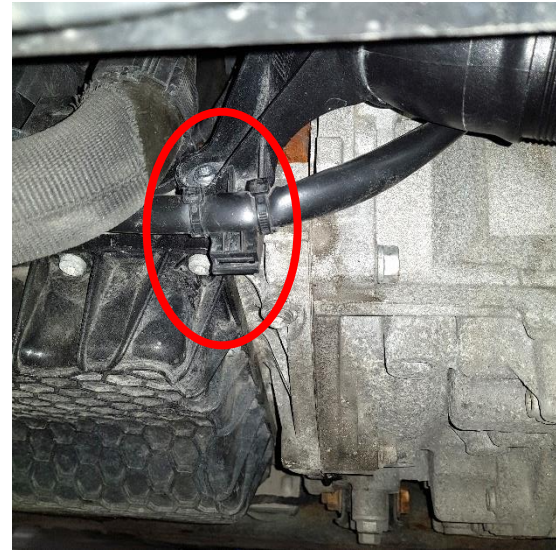
4. Remove for the plastic shield underneath the car 8x Torx T25.



5. Remove both intercooler hoses 4x hose clamps.



6. Disconnect the cable from its bracket on the intercooler inlet pipe also loosen 1x Torx T30.



7. Disconnect the cable from its bracket on the intercooler inlet pipe. Then remove the pressure pipe from the car, remove it downwards.



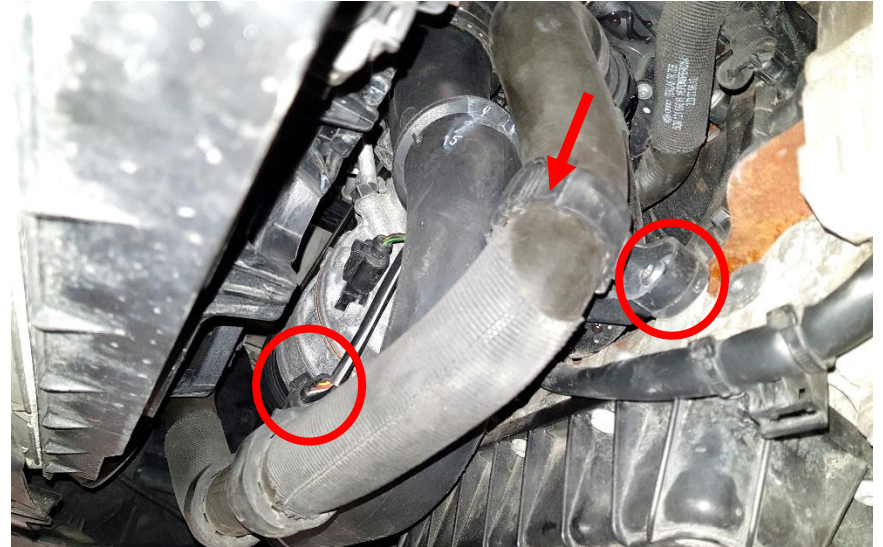
8. Remove the air intake scoop by removing 2x Torx T25 and unclick the radiator hose.



9. Loosen the throttle body hose clamp.



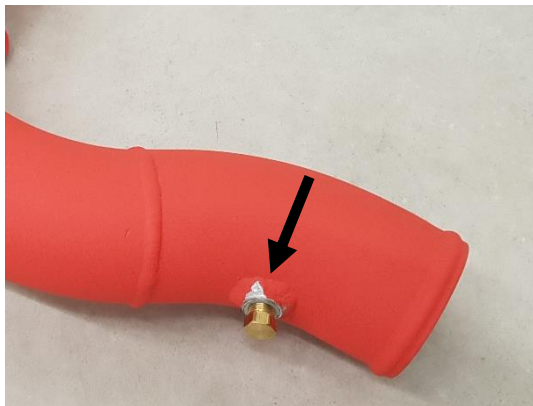
10. Disconnect the sensor cable connector, 2x Torx T30 screws. Also unclip the lower radiator hose from its bracket on the pressure pipe. Then remove the pipe.



11. Install the OEM screws and rubber bushings (4pcs) from the OEM pipes on the do88 pipes. Also remove the sensor from the OEM pipe and install it in the do88 pipe with the included screws.



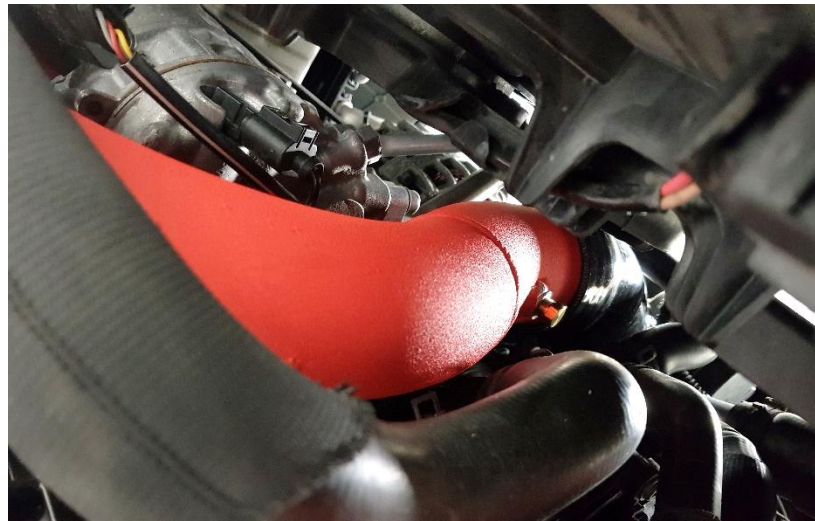
12. The do88 pipe comes with a 1/8 NPT meth injection connection. If you don't want to use this install the included blanking bung. Screw it in carefully with some lubrication!



14. Put the turbo outlet hose on the other intercooler pipe, but don't tighten the clamp yet. Then install the pipe in the car. Just loosely tighten the two screws now.



13. Put the throttle body hose on the intercooler pipe, but don't tighten the clamp yet. Then install the pipe in the car. Just loosely tighten the two screws now.



15. Install the intercooler in- & outlet hoses. Adjust position on all hoses then tighten all clamps and screws. Reinstall all other parts in reverse order.

